



3D Landscape

Unprecedented Accuracy

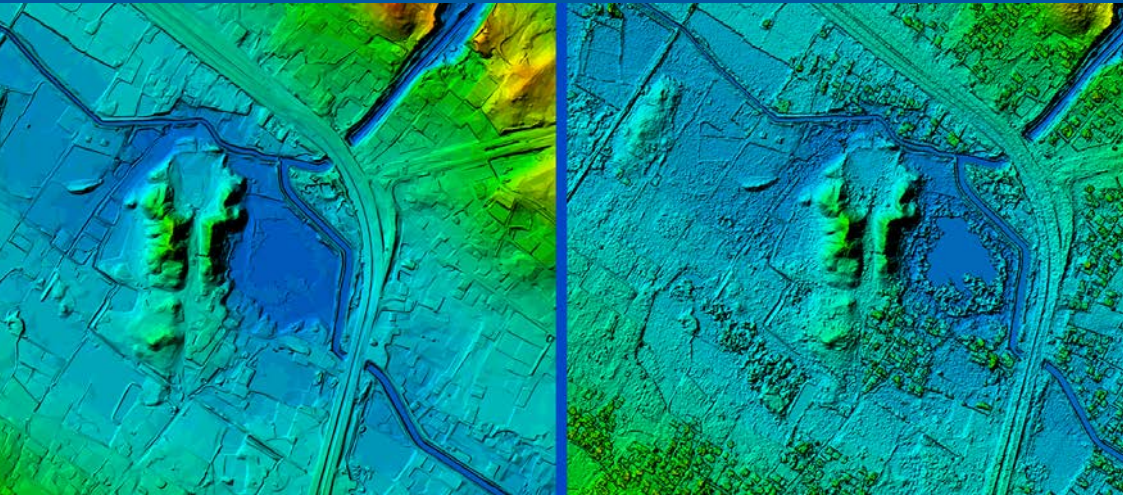
SATPALDA has been working on various **domestic and international** geospatial projects spanning **60+ different countries**. We provide satellite and drone-based high resolution imagery and photogrammetry services to our clients globally.

3D Landscape is SATPALDA's next-generation **global 3D terrain dataset** which provides seamless data up-to **sub-meter post spacing enabling precise topographic analysis**. This is a comprehensive worldwide offering that is available as a -

- Digital Terrain Model (DTM)
- Digital Surface Model (DSM)
- 3D Building Model

Worldwide Sub-meter DSM & DTM

DTM (Digital Terrain Model) simply adds vector elements of the natural terrain, including rivers and hills, to a DEM while DSM (Digital Surface Model) records both the environment's natural and man-made/artificial features.



Accuracy

- Absolute : 50cm to 5m (LE90)
- Valid on all terrain types



Coverage

3D Landscape is available for all countries and locations worldwide



Feature & Bare Earth Model

- DSM with terrain features
- DTM covering bare earth



Hydro Enforced

Water bodies & coast lines are flattened for accurate measurement



Vintage

Most recent or new collect imagery



Applications

DSM & DTM are ideal for in-depth analysis and can be used in countless applications



File Format

- Geo TIFF
- Other file formats are available on request



Post-spacing

30cm to 10m

3D Buildings



- Derived photogrammetrically from high resolution stereo satellite and aerial imagery designed to support developers, architects, network and urban planners in making efficient, cost effective and informed decisions about the urban environment.
- 3D buildings provide an accurate and detailed visual representation of the built environment, allowing interaction, analysis and interpretation of our urban landscape on an unprecedented level.



Height

- Mean Sea Level (MSL)
- Above Ground Level (AGL)



Delivery Format

- ESRI Shapefile
- MapInfo TAB
- MicroStation DGN



Accuracy

- Absolute : 1 meter (LE90 & CE90)



Products

- 3D Buildings
- City Models

Global Presence

Since 2002, SATPALDA has been working on various international geospatial projects spanning across 60 different countries. The company rose to the need for satellite-based products from various industry verticals such as Oil & Gas, Mining, Urban Planning, Infrastructure, Environment, Telecommunication, Agriculture, Water resources, etc. It was a time when satellite-based high-resolution data market was in its infancy. The company has successfully endeavoured to facilitate its users of public and private sectors through awareness and education campaigns. With innovation and quality as guiding principles, SATPALDA uses advanced technologies and ISO 9001:2015 certified quality system mandates to expand the traditional mapping and GIS applications.

Our Clients



Contact Us

Corporate Office:

SATPALDA TRADING PRIVATE LTD. 1006 Kanchenjunga Building, 18,
Barkhamba Road, New Delhi-110001 (INDIA)

Branch Office:

SATPALDA TRADING PRIVATE LTD. CP 2156, First Floor, Sector 16A,
Vasundhara, Ghaziabad-201012 Uttar Pradesh (INDIA)

Mobile: +91-7838410007, +91-9718265000

Landline: +91-120-4135000, +91-11-23325000

www.satpalda.com

info@satpalda.com

